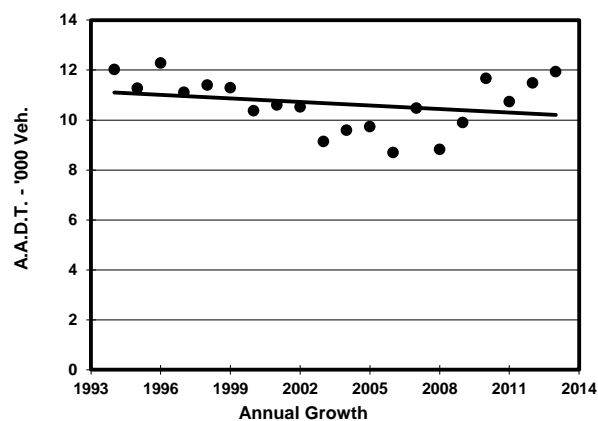
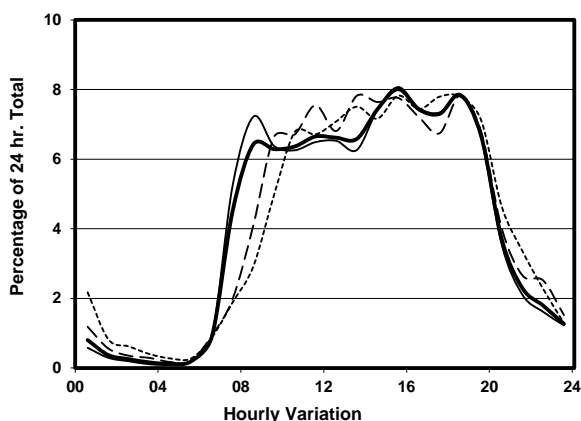
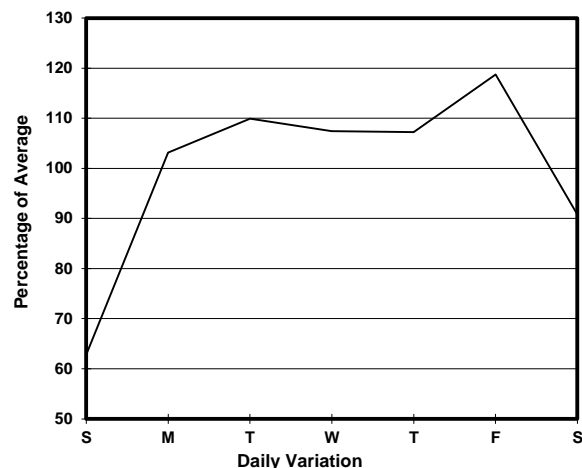
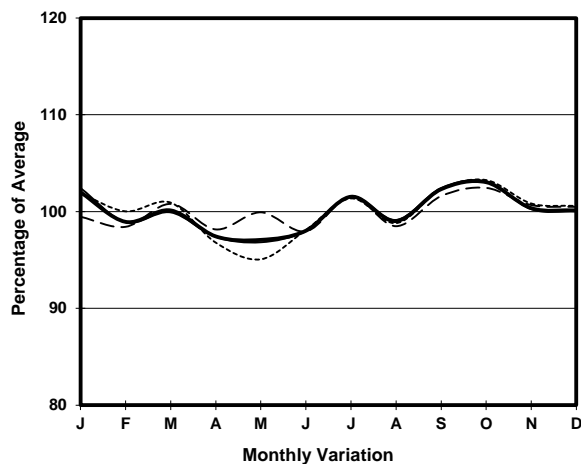


YEAR 2013
 LINK
 COVERAGE (B) STATION 2203
 ROAD NETWORK MAJOR
 ROAD TYPE DISTRICT DISTRIBUTOR

STUBBS RD (from WAN CHAI GAP to WONG NAI CHUNG GAP RD)



1. TRAFFIC FLOW VARIATION AND GROWTH



2. TRAFFIC CHARACTERISTICS (BY DIRECTION)

Parameter	All - Day	Mon. - Fri.	Sat.	Sun.
SOUTH BOUND				
A.A.D.T.	6490	7240	5980	4230
R 12 / 24 - %	80.7	81.7	77.7	76.1
R 16 / 24 - %	95.8	96.3	94.3	93.2
AM Peak Hour	0800-0900	0800-0900	0900-1000	0900-1000
One-way flow at AM peak hour	380	470	370	220
T - % (AM)	-	16.1	-	-
PM Peak Hour	1800-1900	1800-1900	1800-1900	1700-1800
One-way flow at PM peak hour	530	590	480	340
T - % (PM)	-	4.6	-	-
Prop.of commercial vehicles - 16 hr.	-	13.1	-	-
NORTH BOUND				
A.A.D.T.	5450	6090	5080	3420
R 12 / 24 - %	82.4	83.5	80.1	75.6
R 16 / 24 - %	96	96.5	95.3	93.4
AM Peak Hour	0900-1000	0800-0900	0900-1000	0900-1000
One-way flow at AM peak hour	390	490	360	160
T - % (AM)	-	6.9	-	-
PM Peak Hour	1800-1900	1800-1900	1800-1900	1800-1900
One-way flow at PM peak hour	410	450	390	280
T - % (PM)	-	17.3	-	-
Prop.of commercial vehicles - 16 hr.	-	12.1	-	-

3. OTHER INFORMATION AND COMMENT

4. Vehicle classification and occupancy - Monday to Friday

Time		Class of vehicle									
		Motor	Private	Taxi	Private	PLB	Goods veh.		Non	Fr. Bus	
		Cycle	Car		LB		Light	M & H	Fr. Bus	SD	DD
0700-0800	Pro	1.7	44.4	36.6	1.7	3.5	1.7	2.6	6.1	0.0	1.5
	Ocp	1.0	1.5	1.7	10.0	6.3	1.5	1.0	12.6	0.0	30.7
0800-0900	Pro	0.0	64.7	17.0	0.0	1.5	5.8	1.2	8.9	0.0	0.9
	Ocp	0.0	1.8	1.4	0.0	3.8	1.8	1.3	10.3	0.0	23.3
0900-1000	Pro	0.0	69.3	13.2	0.0	0.4	10.6	1.9	3.8	0.0	0.9
	Ocp	0.0	1.3	1.7	0.0	3.0	2.0	2.0	11.9	0.0	24.3
1000-1100	Pro	0.5	53.5	15.5	0.5	0.0	19.7	3.7	5.9	0.0	0.8
	Ocp	1.0	1.7	1.9	2.0	0.0	1.7	1.3	13.6	0.0	25.3
1100-1200	Pro	1.8	54.2	14.6	1.8	0.9	15.5	1.4	8.7	0.0	1.1
	Ocp	1.0	1.6	2.0	4.3	6.5	1.6	1.3	19.1	0.0	22.8
1200-1300	Pro	0.5	48.1	26.6	0.0	0.9	15.4	1.9	5.1	0.0	1.4
	Ocp	1.0	1.6	1.7	0.0	13.5	1.9	1.0	17.9	0.0	29.1
1300-1400	Pro	1.1	50.6	21.1	1.1	0.0	12.6	2.6	9.5	0.0	1.5
	Ocp	1.0	1.6	1.9	9.5	0.0	1.6	1.8	24.0	0.0	21.5
1400-1500	Pro	0.4	44.6	20.4	0.4	0.9	11.0	3.4	17.8	0.0	1.1
	Ocp	1.0	1.5	1.9	5.0	3.5	1.5	1.3	16.1	0.0	20.8
1500-1600 Peak hour	Pro	1.2	52.1	21.9	1.2	0.8	9.5	3.6	8.7	0.0	1.0
	Ocp	1.0	1.8	2.4	5.7	5.5	1.6	1.3	21.0	0.0	30.5
1600-1700	Pro	1.1	63.3	14.7	2.6	0.4	8.7	1.9	6.4	0.0	0.9
	Ocp	1.0	1.8	2.4	2.7	3.0	2.1	1.4	10.1	0.0	37.2
1700-1800	Pro	1.5	62.5	13.5	0.8	0.0	8.3	1.1	11.3	0.0	1.0
	Ocp	1.0	1.6	2.3	2.0	0.0	1.8	1.3	17.5	0.0	39.8
1800-1900	Pro	1.2	64.8	17.3	0.8	2.1	2.9	0.8	9.5	0.0	0.5
	Ocp	1.0	1.6	2.3	1.5	15.4	1.7	2.0	23.4	0.0	78.0
1900-2000	Pro	0.8	57.2	19.6	0.0	1.3	1.7	0.4	18.0	0.0	1.0
	Ocp	1.0	1.6	2.0	0.0	3.7	1.8	1.0	19.3	0.0	41.4
2000-2100	Pro	1.7	52.7	16.7	0.8	0.8	1.7	0.0	23.4	0.0	2.1
	Ocp	1.5	1.3	2.0	4.0	8.0	1.0	0.0	27.4	0.0	36.2
2100-2200	Pro	2.9	61.8	25.0	0.0	0.0	1.5	0.0	5.9	0.0	2.9
	Ocp	1.0	1.7	1.9	0.0	0.0	5.0	0.0	17.0	0.0	21.9
2200-2300	Pro	1.8	67.9	23.2	0.0	0.0	0.0	0.0	3.6	0.0	3.6
	Ocp	1.0	1.8	1.8	0.0	0.0	0.0	0.0	13.0	0.0	15.0
16 hours	Pro	1.0	57.2	18.6	0.8	0.8	8.9	1.8	9.7	0.0	1.1
	Ocp	1.0	1.6	2.0	4.4	7.4	1.8	1.4	18.2	0.0	30.1

Legend

- Pro.** Proportion of vehicles in % (Sum may not add up to 100% due to figure rounding)
- Ocp.** Average occupancy of vehicles
- M&H** Medium and Heavy